

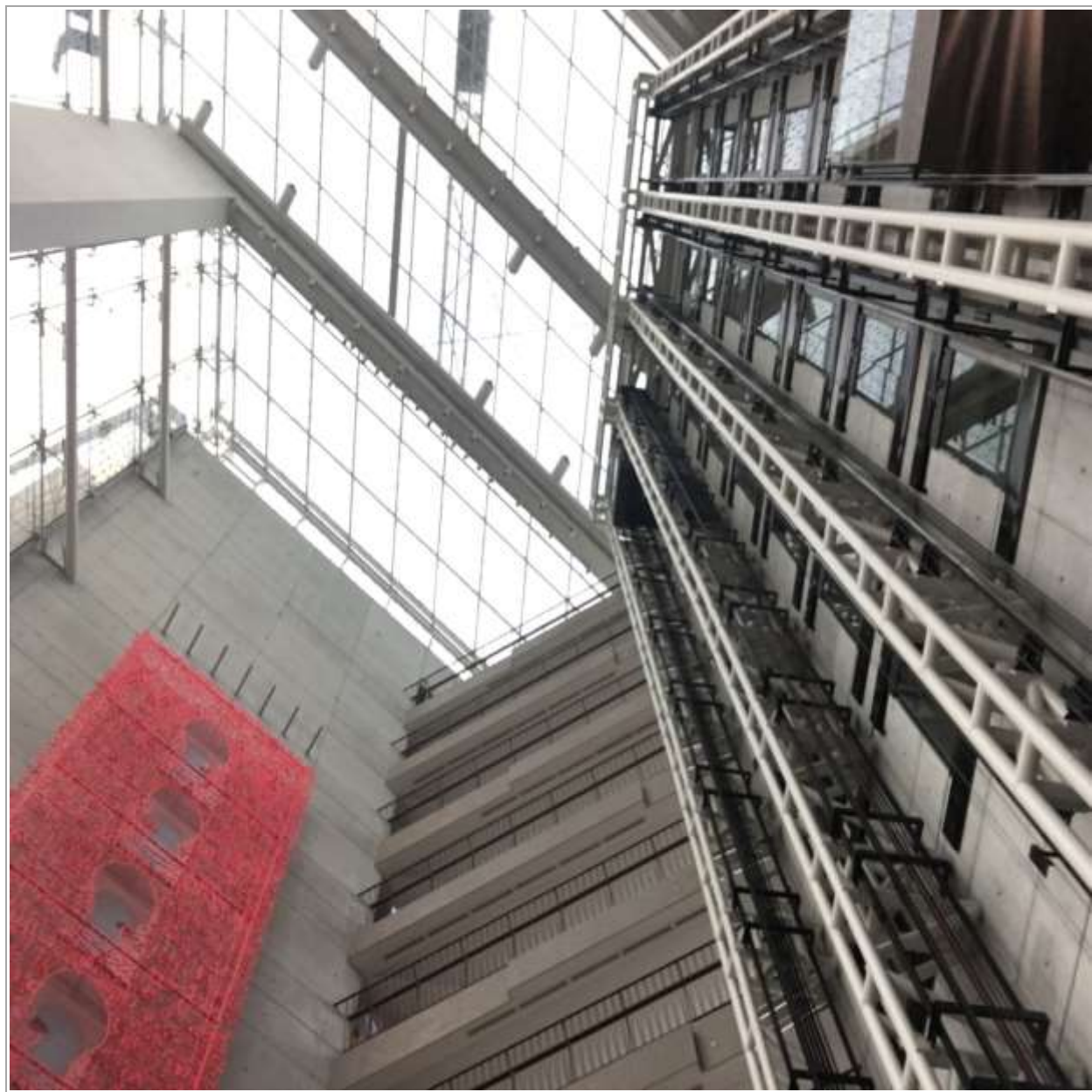


# SEVEN INTERIORS

***“The Perfect Solution To Achieve The Perfect Result”***







**TURNKEY INTERIOR CONTRACTOR**  
&  
**JOINERY MANUFACTURER**



# CONTENTS

1	Introduction to our Group
2	Our 7 Formula
3	Our Vision
4	Our Services And Resources
5	About Seven Interiors & Management
6	Award Winning Project – EL Mercado Village
7	Portfolio
8	Project Gallery
9	Contacts



# INTRODUCTION TO OUR GROUP

## **7 INTERIORS IS A SPECIALIST INTERIORS COMPANY THAT IS PART OF A WELL ACCOMPLISHED GROUP**

*Our Group has accomplished construction of many high Rise Towers, complete resorts with a marina and Yacht club, Steel commercial buildings for factory use or retail. Indoor and outdoor Swimming Pools for either public use or private, Construction of multiple villa schemes affordable and high end EL Mercado Village, the construction of High Value residences for private clients.*

*We have accomplished Turnkey Interior fit out for the aforementioned Towers, Villas and additionally a portfolio of Restaurants, Bars, Museums, Offices.*

*Here our presentation does not include all projects as we cannot disclose due to client privacy.*





*The Rings Of Growth Gives  
Experience and Strength*



The perfect solution for a successful project needs the best ingredience and we have all 7.....

1. *Experience*
2. *Planning*
3. *Quality*
4. *Commitment to deliver on time*
5. *Value for money*
6. *Resources*
7. *Fluent Communication*

***“The Perfect Solution to Achieve The Perfect Result”***



## **Our Vision**

*“Our vision and goal is to provide our clients with quality of service, product and excellence and to define a seamless easy solution for Interior Fitouts”*



Section 4

## **OUR SERVICES AND RESOURCES**





# **TURNKEY INTERIORS and SHOPFITTING**

We offer a very experienced team to deliver your project from design development through to completion. We have experience in delivering projects in the following sectors:-

Hotels Rooms, Hotel Public Areas, Offices, Residential, Food and Beverage, Retail, Airports, Hospitals, Schools, Shopfitting

Under Turnkey Service the following disciplines can be included

- Professional Project Management
- Design and Build if specified
- Joinery Supply /install
- Loose furniture and Soft Furnishings
- Office Furniture Solutions
- Gypsum and Paint works
- Glass, Metal, Upholstery, Fabrics, Natural Stone, Ceramic, GRC and GRP special items.
- MEP services and Lighting Specialist Lighting
- Sound Systems, Building Management Systems ( BMS)
- Smart Systems
- Value Engineering



## OUR JOINERY FACTORY



Our Joinery Factory is well equipped with skilled Artisans and fine machinery including CNC to enable either bespoke or mass produced work.

## JOINERY CONTRACT SERVICES

We offer our Specialist Joinery and Furniture manufacturing service for both supply only and supply and install. To each discipline we can deliver a full joinery fitout work package . In each project we will provide shop drawings and samples for the clients approvals.

Typical items but not limited to..

- Kitchens,
- Wardrobes,
- Vanity Units
- Doors,
- Wall Panelling,
- Wooden Floors,
- Bars And Counters
- Loose Furniture,
- Fitted Furniture.
- Wooden Ceilings ,
- Pergolas,
- Sunshades
- Feature Staircases
- Arabesque Designs

The Joinery Factory equipped with substantial semi-automated machinery and experienced team of Artisans. Using our factory we will manufacture bespoke or mass produced items in accordance with your specifications. Our quality materials are sourced from around the world depending on particular specifications. We hold suppliers with stocks of standard materials in order that we can provide a prompt service.

## OUR METAL AND ALUMINUM FACTORIES



Our Metalwork factory is equipped to service our fitout works and provide components for furniture or has can carry out full structures and building.

## **METAL WORK FACTORY**

Structural Steel projects including commercial Building Fabrication, Special Steel structures to order, Mezzanine floors, Architectural features, Brass Railings, Decorative Steel Railings.

## **GLASS**

Glass Office partitions, Glass Railings, Shower Screens, Glass wall claddings and feature Glass to order.

## **ALUMINUM FACTORY**

External Doors and Windows, Sliding doors, Louvres and Grilles, Curtain wall systems.



## **TECHNICAL AND DESIGN**

Design Development to working shop drawings.

Material Approval Procedures to ensure client specification compliance.

## **VALUE ENGINEERING**

We can work with the client's designers after contract award to source alternative materials with similar technical performance and appearance options of many materials and fabrication advantages to help clients to reduce their material costs.

## **PROCUREMENT**

We procure all materials and elements involved In fit out projects, sample selection and options for clients for supply only or supply and install.



## **OUR HUMAN RESOURCE AND PROJECT SUPPORT**

We are part of major group of companies of which has departments of, Accounts, Finance Management, Cost Control, Commercial and Quantity Surveying, Legal, Human Resources, Talent Development, Project Management, Business and project Administration, Construction, Manufacturing, MEP Engineering, Quality Control, Procurement, Design and Marketing. Our direct Labor takes care of Carpentry, Masonry, Painting, gypsum, civils, carpentry, and MEP engineering.

We are able to cover most disciplines of the work tasks inside our Group, we do also employ reliable quality subcontractors to either enhance our capabilities or to carry out very specialist elements and all managed carefully by us.





Section 5

**ABOUT SEVEN INTERIORS**  
**&**  
**MANAGEMENT**



## THE CREATION

SEVEN INTERIORS is a Specialist Turnkey Interior Contractor, part of the Promoseven Holdings BSCC Group. Its management has in excess of 30 years of experience and has successfully completed a comprehensive portfolio of High Quality well known projects.

Seven Interiors has a comprehensive offering under one roof, including a semi-automated Wood working factory, Stainless Steel fabrication, Structural Steel, Aluminum and glass works for doors, windows and curtain walling.

Market needs for a specialist "Interior Fitout" company with associated manufacturing facilities and resources led to the creation of Seven Interiors being the interior and manufacturing arm for sister company "Decorators Wll" the well-established Main Contractor with an impressive 18 year track record of delivering construction and turnkey interior works in Bahrain and Dubai. Their works extend to construction of a portfolio of Towers, multi-floor buildings, Landmark building and structures, multiple villa development projects , high end residences and



Abraj Al Lulu Bahrain

many food and Beverage outlets including construction of a complete holiday resort including with restaurants, Spa, Hotels and a Marina.

**SEVEN INTERIORS** immediately is benefiting from the inherited teams, factories, the management structure and the portfolio of experience and strength of the group.

The Managing President of Seven Interiors with 30 years experience with Leading roles in delivery of high quality projects and Management of substantial companies of which in his term has executed well known projects in United Kingdom and across the Middle East.

The mentioned portfolio includes projects in London , Carlton Towers Hotel Knightsbridge 117 rooms refurbishment, Her Majestys Guild Hall , Shakespere Globe Theatre , Harvey Nichols Store Knightsbridge Food and Restaurants 5<sup>th</sup> floor and basement eatery Canary Wharf Tower 50 floors , Credit Suisse Bank with Morgan Stanely offices achieving over 1million sq ft of office space fitout works in London Docklands.





Harvey Nichols Food Courts Knightsbridge London

The portfolio continued in UAE, Burj Khalifa public areas, Atlantis Hotel Palm Jumeirah Public Areas and Food and Beverage sections, Abu Dhabi Airport T3 and T1 Retail and Food Courts, Ocean Heights 88 floors Public areas, Spas, gyms, reception and lift lobby areas. Jumeirah Creekside Hotel and Aviation Club.

In Jordan, Rotana Amman Tower 48 floors.

In Saudi Arabia, the mega sized Hilton Hotel Riyadh and also overseeing the Sharaton Hotel Riyadh.

In Oman as a Joinery Fitout and loose furniture contractor to Wave Plaza Hotel, Kempinski Hotel, Millenium Hotel, Anantara Hotel, Saraya Banda Al Jissah Resort running a company with around 80 projects live at any one time.

His Experience Ranging from ,Construction, Interiors, Mep works, Manufacturing process, Value Engineering, Design Management, Commercial, Business and Risk Management.

With this skill set and experience at your service, clients have advantage of the best advice and solutions for their projects.





## Section 6

# OUR AWARD WINNING PROJECT





## First Bahrain's El Mercado Village honoured at the International Property Awards 2017



First Bahrain Real Estate Development Co. was honoured at the International Arabian Property Awards for Africa and Arabia at the JW Marriot Marquis Hotel, Dubai on the 7<sup>th</sup> of September with five awards of distinction for their project, El Mercado Village. The globally recognized International Property Awards celebrate the highest level of achievement by companies operating in all aspects of the real estate industry.

El Mercado Village was particularly recognized for excellence in Residential Development and Property – Single Unit Development.

The prestigious International Property Awards are judged annually by a panel of over 70 industry experts who focus on design, quality, service, innovation, originality, and commitment to sustainability. The international recognition associated with these awards represents a significant milestone in the history and growth of First Bahrain, a real estate developer with over 1,000,000 square feet of property in Bahrain.

Over one third of the 8 premium stand-alone villas and 34 semi-detached homes of El Mercado Village have already been sold. The award-winning interiors are available for viewing now on appointment in the show home.

Construction is progressing well with completion expected in December and handover early next year. The signature development is located just north of the Sheikh Isa Bin Salman Highway, offering residents the fastest morning access to Saudi causeway or an easy ride home from Manama.

Adjacent to the upscale neighbourhood market, El Mercado Janabiya, anchored by the newest Alosra supermarket, residents will have easy access to restaurants, cafés, salons, a pharmacy and other services, supporting a healthy and high quality lifestyle.

The premium villas were designed by Sanad Engineering and are being built by general contractor, “**Decorators wll**”. Impact Interiors has added an elegant touch to the homes with their award winning interior designs. All sales are managed through escrow accounts with Kuwait Finance House.



Section 7

## **THE PORTFOLIO**



# PROJECTS COMPLETED

## Residential/Mixed use Towers

### **Abraj Al Lulu,**

2x 40 and 1x50 Storey Towers  
Kingdom Of Bahrain

### **Busaiteen Tower**

14 Storey Residential Building  
Kingdom Of Bahrain

### **Saray Tower - Juffair**

21 Storey Residential Building  
Kingdom Of Bahrain

### **Reef Island**

10 Storey Residential Building  
Kingdom Of Bahrain

### **Miknas Plaza Dubai**

16 Storey Residential Building

## **Dedicated Office Buildings**

### **Promoseven Head Quarter**

4 Storey Building  
Kingdom Of Bahrain

### **MCN Tower**

15 Storey Building Tecom Dubai  
United Arab Emirates

## **Museum**

### **Moving Picture Museum**

Tecom, Dubai,  
United Arab Emirates

## **Residential Villas**

### **Al Mercado Village**

42 Villas - Janabiya  
Kingdom Of Bahrain

### **Al Dair Gardens**

57 Villas  
Kingdom Of Bahrain

**Cont.....**



Miknas Plaza

## **HOSPITALITY PROJECTS**

### **Restaurants**

**Rays Restaurant and Buffet**  
Kingdom Of Bahrain

**La Taverna**  
Kingdom Of Bahrain

**Camelot Restaurant**  
Kingdom Of Bahrain

**J. J Irish Bar**  
Kingdom Of Bahrain

### **Hotels**

**C- Hotel**  
Coral Bay  
Kingdom of Bahrain

**Mashtan Hotel**  
Kingdom Of Bahrain

### **Marina**

**Coral Bay Resort**  
Kingdom Of Bahrain



Section 8

## **PROJECT GALLERY**





## Promoseven Head office

Turnkey Construction and Interior Fitout

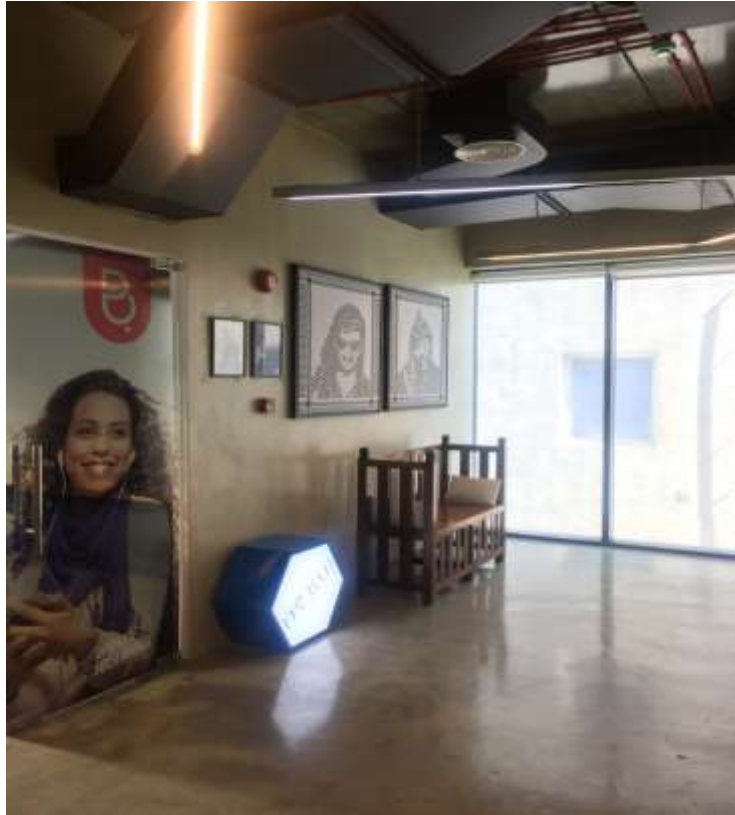




















## MCN Building Tecom Dubai

Full office Interiors Fitout and Construction











The Moving Picture Museum Dubai





Interior Fitout Works and Artifact Display Cabinets







## Saray Tower Juffair

Full Turnkey Project





Saray Tower Interior images supplied by our Realtor





Saray Tower Interior images supplied by our Realtor







## Coral Bay Resort Bahrain

A Turnkey Projects including Interior Fitout construction and Design



Coral Bay was constructed by our Sister Company “**Decorators wll**” It has been expanded several times and all the works carried out by our teams. There are several signature restaurants, and bars serviced by a substantial commercial kitchen. The \$5m Floating C-Hotel the first in Bahrain. A substantial, Marina, a Gym, a Spa, a Salon, swimming pools and more. All disciplines in the process and construction and all manufactured items and elements of the interior fitout works was designed in house and delivered by our team and our factories.









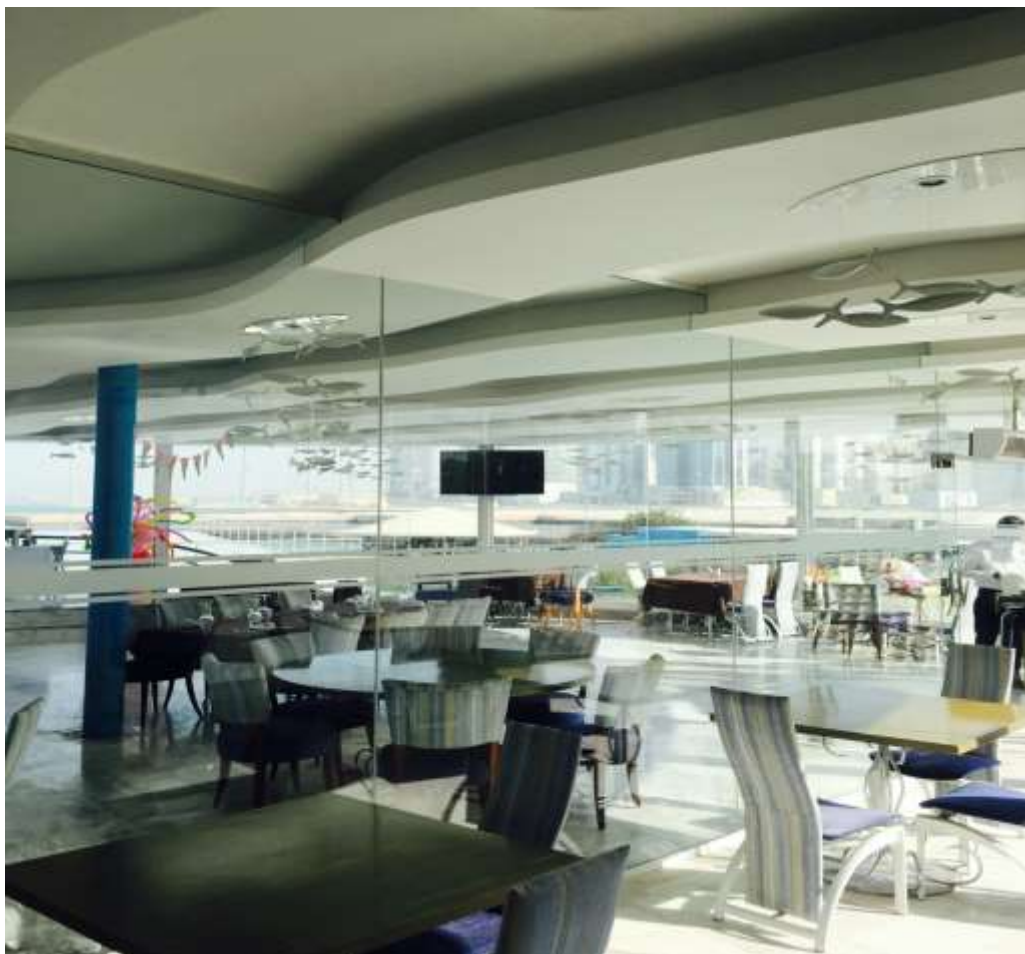


Rays Restaurant and Lounge





1<sup>ST</sup> Floor Bar Lounge and Function Area





Function Suite





La Taverna Italian Restaurant



Boat converted to Hotel - Full Interior Design and Refurbishment  
making the first floating Hotel in Bahrain.

C – HOTEL









C- HOTEL ROOM



LUXURY SPA at CORAL BAY















Design , Construction of purpose made building and  
Interior Fitout in Medieval Style including Loose Furniture  
and Authentic Memrobillia





Authentic Period Style Interior Features and Furnishings







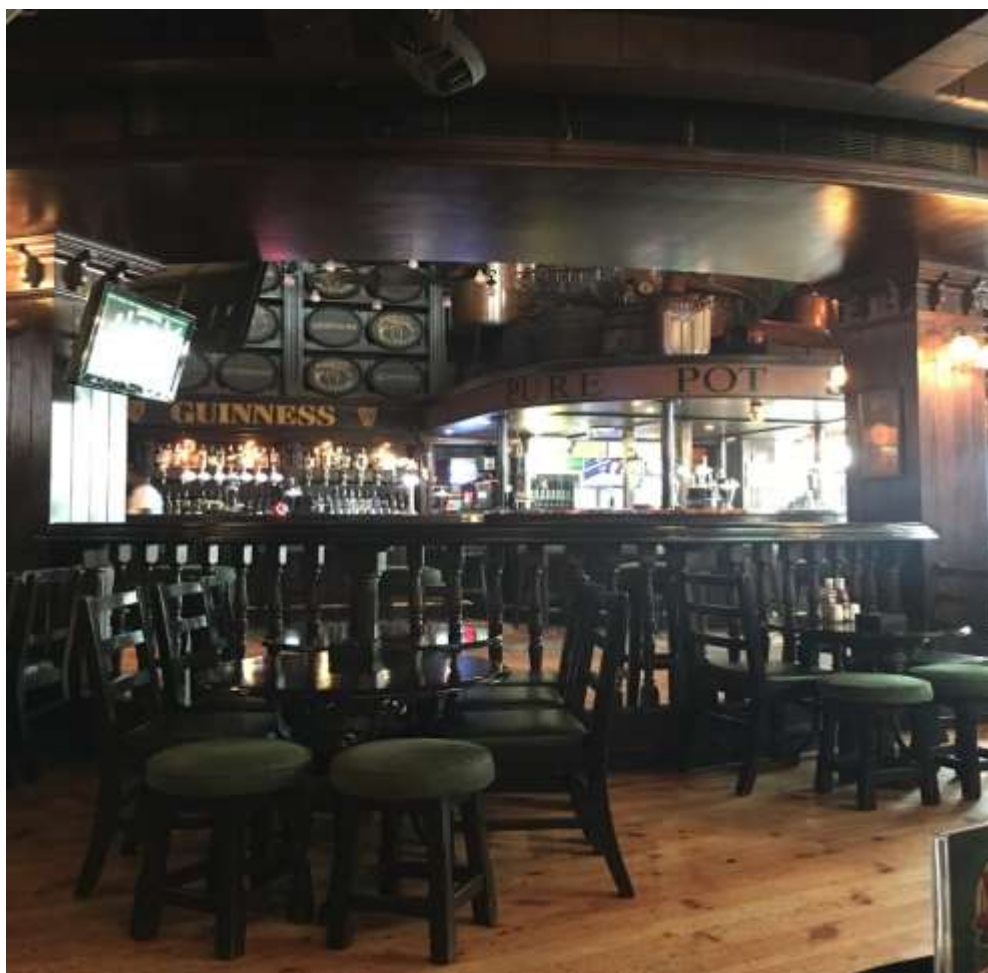


OFTEN COPIED NEVER BETTERED

Extensive Fitout work involving High class Joinery Works

















## 14 Storey Residential Building Busaiteen

“Main Contractor Decorators wll Turnkey Project”



Interior Glass partitions,  
Curtain Walling External Building



Purpose Made Doors Wooden Doors  
Laminate Finish

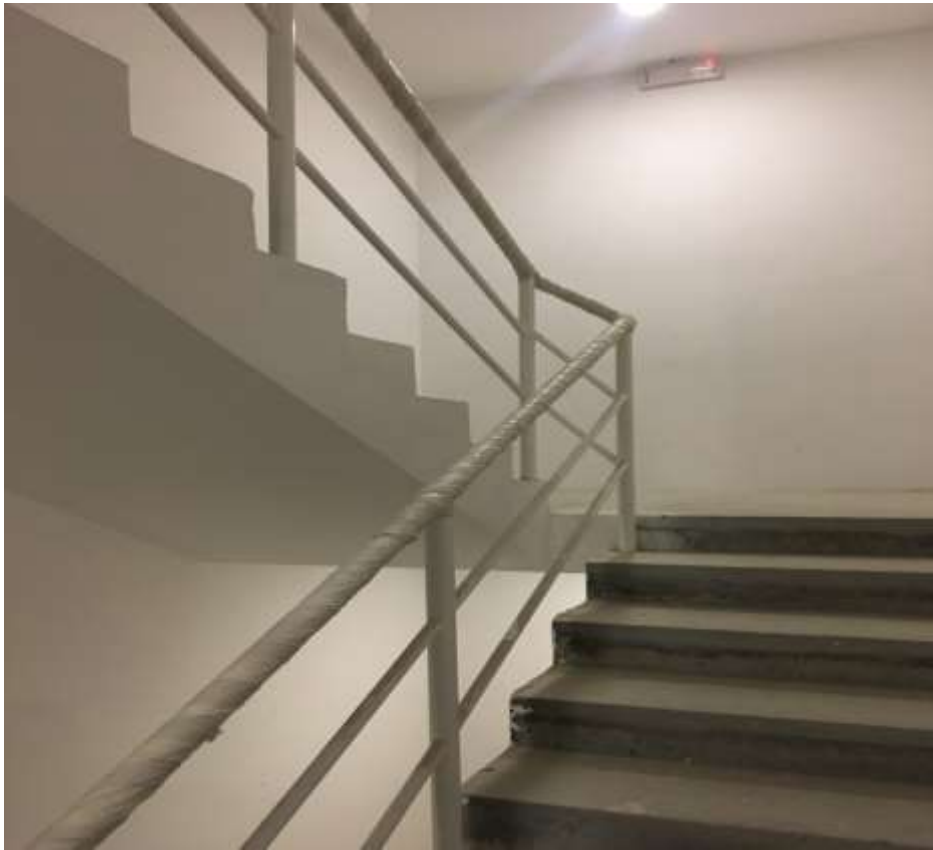




Corridor Fire Doors



Exterior Windows ,Doors and Rails



Stair Ballustrade



External Balcony Rails



Aluminium work -Car Park Louvres



Award Winning  
Full Construction and Interior Fitout Turnkey Project  
42 Units



Full Construction



Aluminum Doors and Windows, Steel Gates





Full Interiors Fitout Works, Furniture and Soft Furnishings





















AL Dair Gardens Bahrain – Turnkey project Construction and Interiors

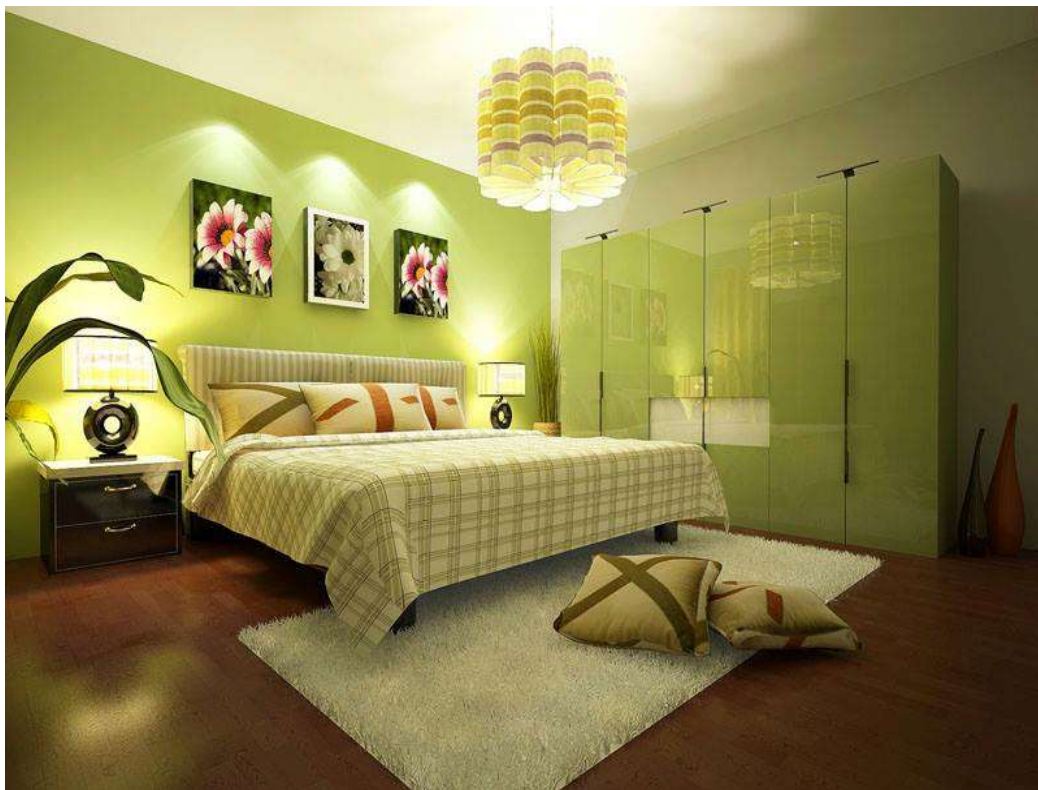


AL Dair Gardens Bahrain

Construction process







Interior Finishes and Furnishings Renderings



Interior Finshes and Furnishings Renderings



WE LOOK FORWARD TO WORKING WITH YOU...





## CONTACT

Cell            +973 343 70949

Office        +973 17 500 777

Fax            +973 17 224 004

[sales@7interiors.com](mailto:sales@7interiors.com)

[www.7interiors.com](http://www.7interiors.com)

Factory :  
Building 789, Road 5217,  
Block 952, Raz Zuwayed,  
Southern Governate, Bahrain

Sales Office :  
Promoseven Building  
1130, Road 1531,  
Block 215, Muharraq,  
Bahrain

